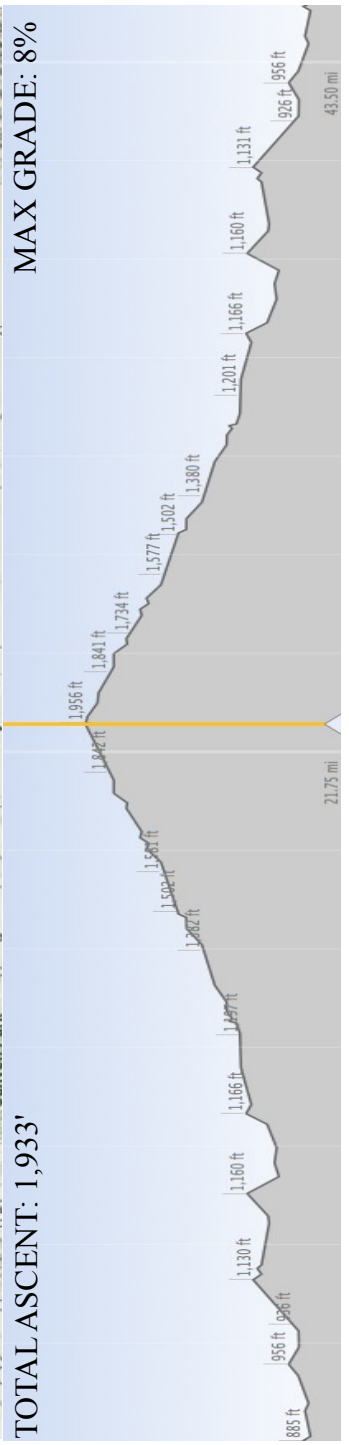
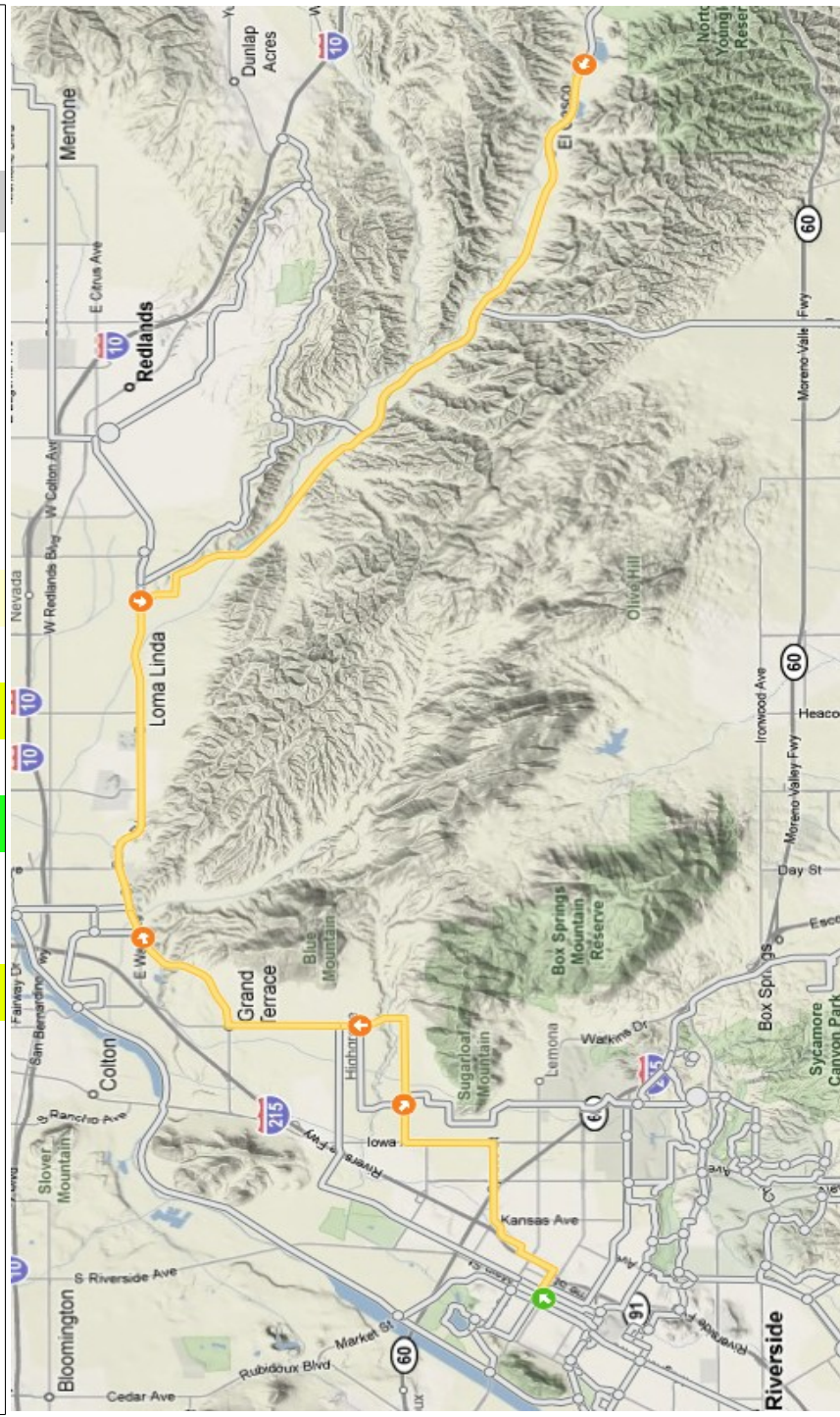


# Riverside Bicycle Club Fisherman's Retreat

@	Dist	Turn	Onto	For
0.0	R	Mission Inn	0.37	
0.4	L	Vine → 1 <sup>st</sup> → E La Cadena	1.02	
1.4	R	Spruce	1.00	
2.4	L	Iowa	1.01	
3.4	R	Palmyrita	1.61	
5.0	L	Mount Vernon	2.03	
7.0	R	Barton	1.87	
8.9	R	Barton (again)	4.23	
13.1	R	San Timoteo Canyon	9.28	
22.4	R	Fisherman's Retreat		
<b>Grub Stop/Turnaround</b>				
22.4	L	San Timoteo Canyon	9.28	
31.7	L	Barton	4.23	
35.9	L	Barton (again)	1.87	
37.8	L	Mount Vernon	2.03	
39.8	R	Palmyrita	1.61	
41.4	L	Iowa	1.01	
42.5	R	Spruce	1.00	
43.5	L	E La Cadena → 1 <sup>st</sup> → Vine	1.39	
44.5	R	Mission Inn	0.37	
44.8	<b>FINISH</b>			



Riverside Bicycle Club Fisherman's Retreat				Riverside Bicycle Club Fisherman's Retreat				Riverside Bicycle Club Fisherman's Retreat			
@	Dist	Turn Onto	For	@	Dist	Turn Onto	For	@	Dist	Turn Onto	For
0.0	R	Mission Inn	0.37	0.0	R	Mission Inn	0.37	0.0	R	Mission Inn	0.37
0.4	L	Vine → 1 <sup>st</sup> → E La Cadena	1.02	0.4	L	Vine → 1 <sup>st</sup> → E La Cadena	1.02	0.4	L	Vine → 1 <sup>st</sup> → E La Cadena	1.02
1.4	R	Spruce	1.00	1.4	R	Spruce	1.00	1.4	R	Spruce	1.00
2.4	L	Iowa	1.01	2.4	L	Iowa	1.01	2.4	L	Iowa	1.01
3.4	R	Palmyrita	1.61	3.4	R	Palmyrita	1.61	3.4	R	Palmyrita	1.61
5.0	L	Mount Vernon	2.03	5.0	L	Mount Vernon	2.03	5.0	L	Mount Vernon	2.03
7.0	R	Barton	1.87	7.0	R	Barton	1.87	7.0	R	Barton	1.87
8.9	R	Barton (again)	4.23	8.9	R	Barton (again)	4.23	8.9	R	Barton (again)	4.23
13.1	R	San Timoteo Canyon	9.28	13.1	R	San Timoteo Canyon	9.28	13.1	R	San Timoteo Canyon	9.28
22.4	R	Fisherman's Retreat		22.4	R	Fisherman's Retreat		22.4	R	Fisherman's Retreat	
Grub Stop/Turnaround				Grub Stop/Turnaround				Grub Stop/Turnaround			
22.4	L	San Timoteo Canyon	9.28	22.4	L	San Timoteo Canyon	9.28	22.4	L	San Timoteo Canyon	9.28
31.7	L	Barton	4.23	31.7	L	Barton	4.23	31.7	L	Barton	4.23
35.9	L	Barton (again)	1.87	35.9	L	Barton (again)	1.87	35.9	L	Barton (again)	1.87
37.8	L	Mount Vernon	2.03	37.8	L	Mount Vernon	2.03	37.8	L	Mount Vernon	2.03
39.8	R	Palmyrita	1.61	39.8	R	Palmyrita	1.61	39.8	R	Palmyrita	1.61
41.4	L	Iowa	1.01	41.4	L	Iowa	1.01	41.4	L	Iowa	1.01
42.5	R	Spruce	1.00	42.5	R	Spruce	1.00	42.5	R	Spruce	1.00
43.5	L	E La Cadena → 1 <sup>st</sup> → Vine	1.39	43.5	L	E La Cadena → 1 <sup>st</sup> → Vine	1.39	43.5	L	E La Cadena → 1 <sup>st</sup> → Vine	1.39
44.5	R	Mission Inn	0.37	44.5	R	Mission Inn	0.37	44.5	R	Mission Inn	0.37
44.8		<b>FINISH</b>		44.8		<b>FINISH</b>		44.8		<b>FINISH</b>	

Total Ascent: 1,933'

Max Grade (8%)

Total Ascent: 1,933'

Max Grade (8%)

Total Ascent: 1,933'

Max Grade (8%)